

What is PB4L?

Framework for enhancing adoption & implementation of



Continuum of evidence-based interventions to achieve



Academically & behaviourally important outcomes for




All Students




This process is a marathon.....
Not a sprint!





Te Awamutu College
Creating Learning Success for Every Student



Your Name
Form
Gaining 20 R Points
2020

Principal's Signature: *J. Mumberg*



Te Awamutu College is a **PB4L** School. We are building a culture where positive behaviour and learning is a way of life.

PB4L looks at rewarding Positive Behaviour

Staff at Te Awamutu College will award R Points to students. The more R Points students earn, the more rewards they can gain.

20 Points = A PB4L Certificate

40 Points = A \$5 Canteen Voucher

60 Points = A PB4L Pen

90 Points = A PB4L Water Bottle

130 Points = A \$20 Warehouse Voucher

Students earn an **R Point** by:

- Being **Responsible**
- Having Positive **Relationships**
- Showing **Respect**

Recognition Slip

Student's Name: _____

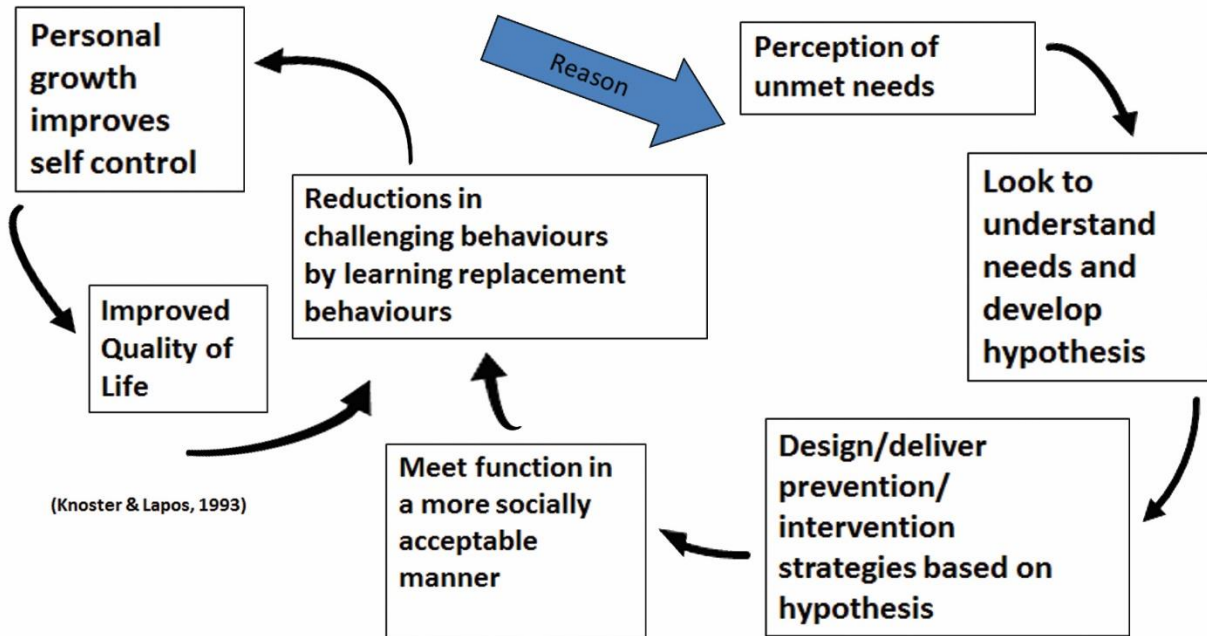
- Being Responsible
 Positive Relationships
 Showing Respect

Teacher's Signature: _____

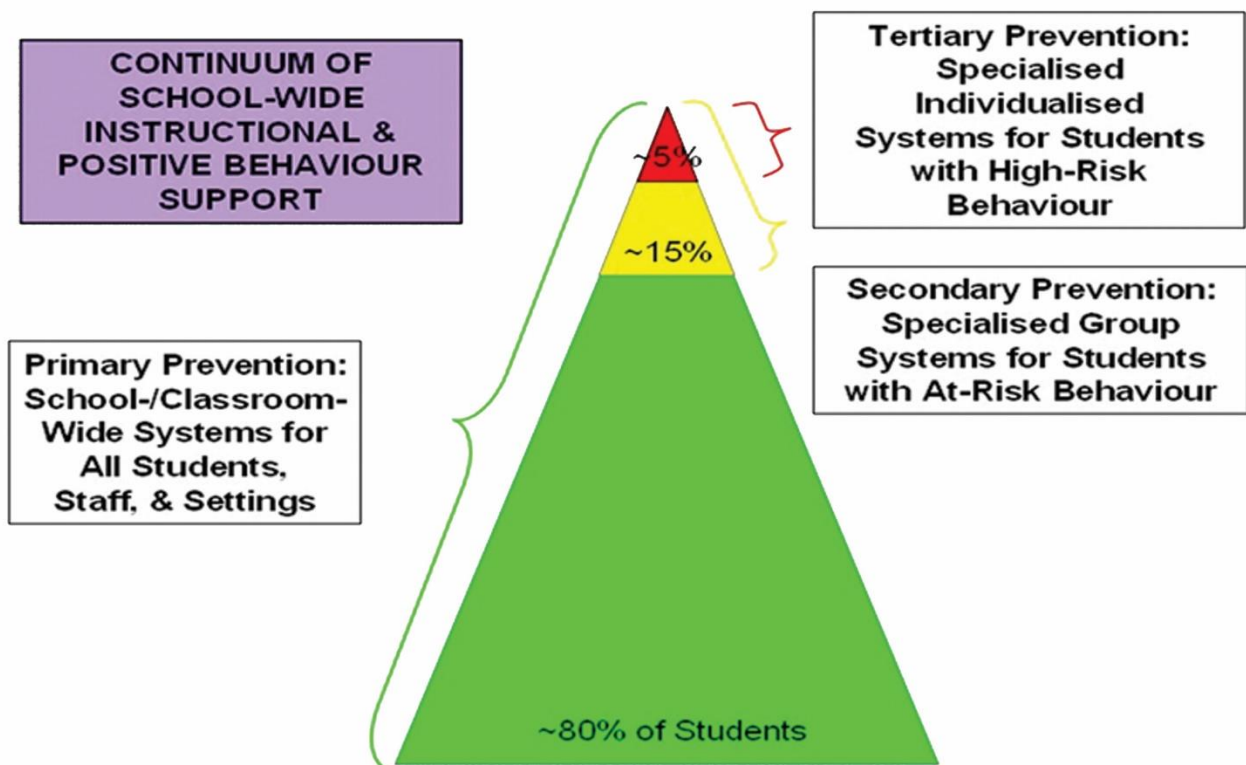
RESPECT



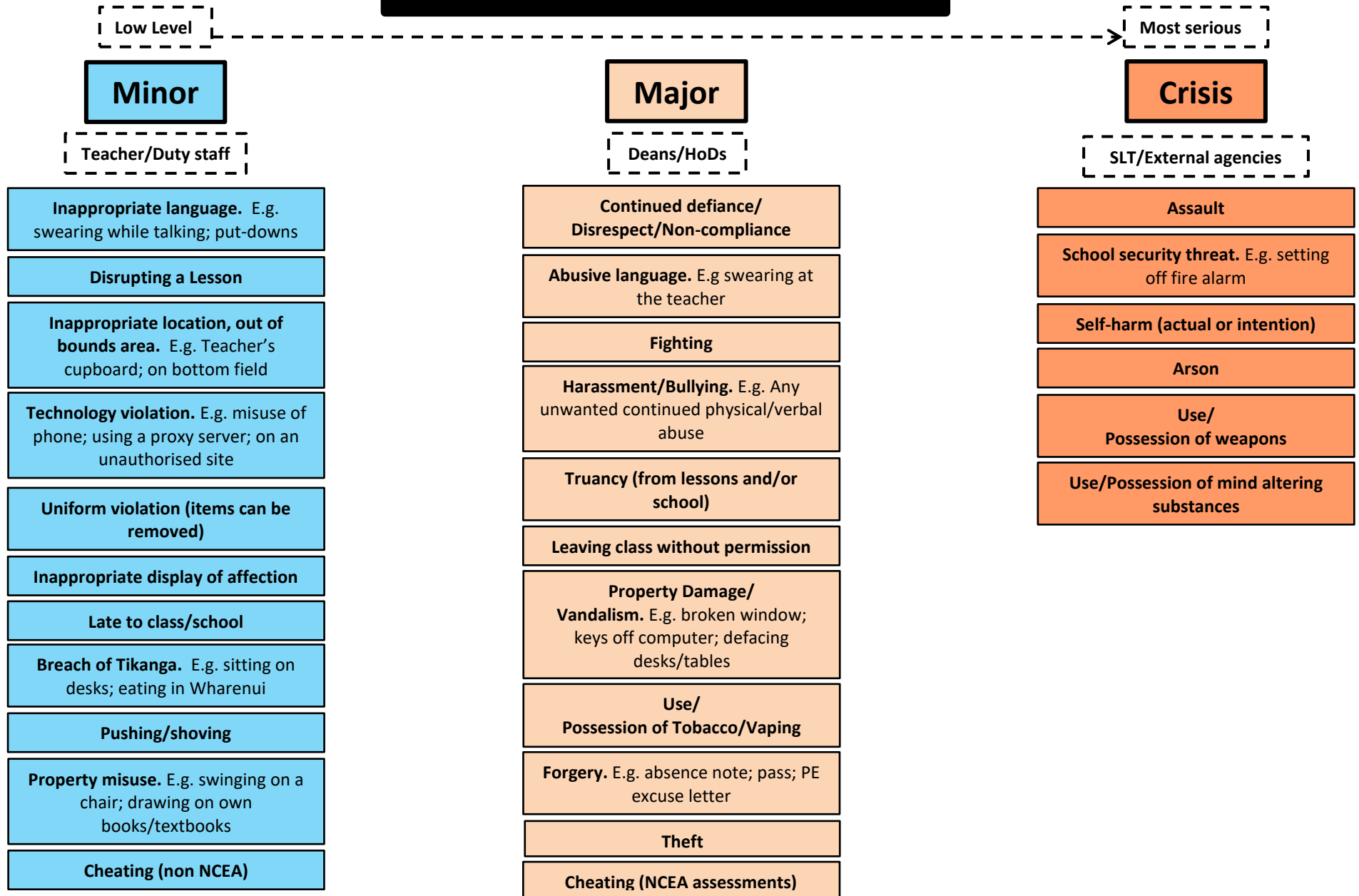
PB4L SCHOOL-WIDE APPROACH



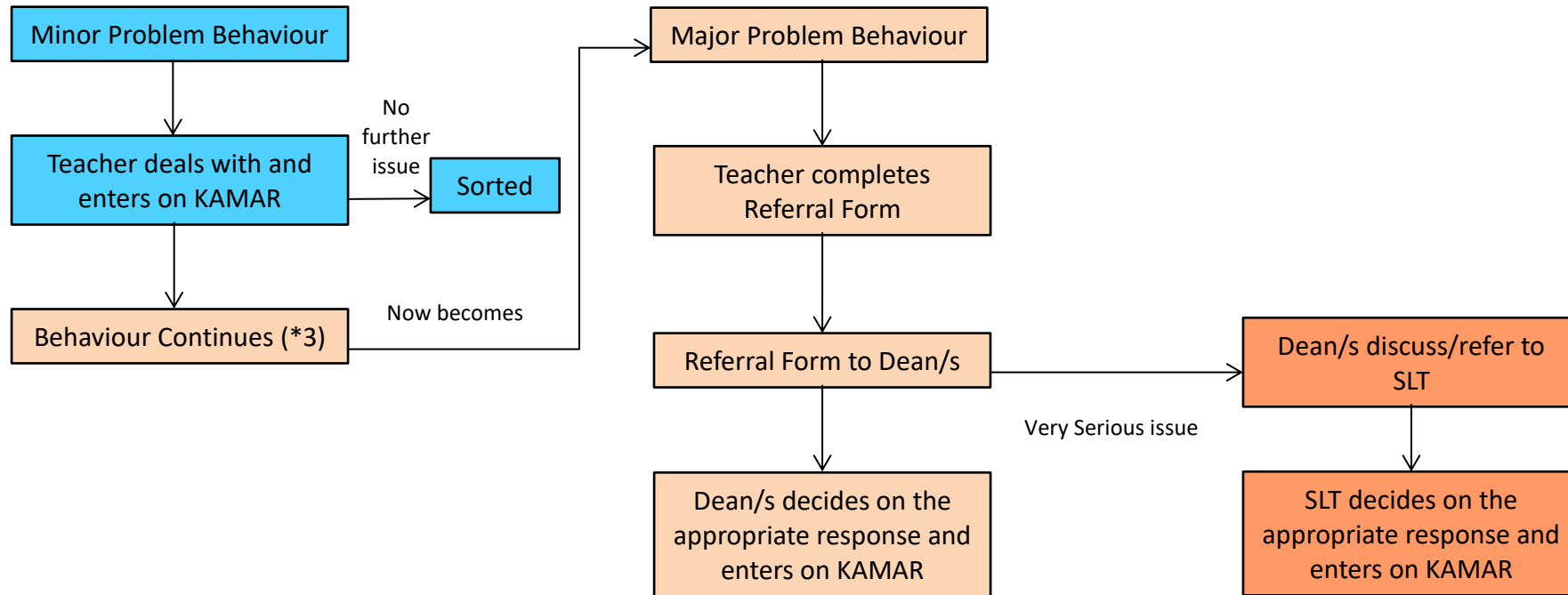
Three Tiered Continuum



PB4L – Majors and Minors



Discipline Flow Diagram



Possible Courses of Action for a Classroom Teacher while the behaviours are still MINOR

- * Proximity
- * Nonverbal cue
- * Proximal praise
- * Review routine
- * Seek advice from the HOD/TIC
- * Seek advice from the HOD Learning Support

- * Change activity
- * Re-direct
- * Re-teach the expected behaviour
- * Provide choice
- * Increase group/individual teaching

- * Home contact
- * Restrict privileges (seating arrangement etc)
- * Behaviour planning, contract

Te Awamutu College Behaviour Expectations

	All Areas	All Classrooms	Specialist Rooms (including the Gyms)	Library
Respect	<ul style="list-style-type: none"> • Use polite and appropriate language • Take care of our school environment • Be considerate of other people and their property • Show respect to our guests and visitors 	<ul style="list-style-type: none"> • Take care of furniture, equipment and resources • Let the teacher teach and students learn • Be positively engaged in learning 	<ul style="list-style-type: none"> • Take care of equipment and resources 	<ul style="list-style-type: none"> • Respect our wonderful resources – people and property
Responsibility	<ul style="list-style-type: none"> • Follow instructions given • Dress in correct uniform • Be in the right place at the right time • Sensible and safe behaviour at all times • Use technology appropriately • Use the rubbish bins and expect the same from others 	<ul style="list-style-type: none"> • Have the correct equipment • Be on time • Drink water only • Only consume food when appropriate 	<ul style="list-style-type: none"> • Follow the rules of the specialist room you are in • Use the equipment as instructed • Report accidents and damages 	<ul style="list-style-type: none"> • Return books by the due date • Leave it as you found it • Use an appropriate voice for the library
Relationships	<ul style="list-style-type: none"> • Be supportive of others • Co-operate with others 	<ul style="list-style-type: none"> • Contribute positively • Value the opinions of others • Actively listen to others 	<ul style="list-style-type: none"> • Work co-operatively in a shared space 	<ul style="list-style-type: none"> • Be considerate of other library users • Work with the library staff

	Marae	Assemblies	Student Centre/ Main Office	Grounds
Respect	<ul style="list-style-type: none"> Follow protocols (Kawa, Tikanga) Treat O-Tāwhao as a taonga 	<ul style="list-style-type: none"> Show pride in yourself and the College Walk in quietly and sit down Listen to the person who is talking 	<ul style="list-style-type: none"> Be respectful to the staff who work there Respect people's privacy 	<ul style="list-style-type: none"> Look after our environment as a taonga
Responsibility	<ul style="list-style-type: none"> Leave it how you found it Share our space 	<ul style="list-style-type: none"> Sit in the correct place Honour the occasion 	<ul style="list-style-type: none"> Be there for a purpose Be patient Leave when you have finished 	<ul style="list-style-type: none"> Put rubbish in the bins Stay within the designated areas
Relationships	<ul style="list-style-type: none"> Be welcoming Work and learn together 	<ul style="list-style-type: none"> Congratulate others on their achievements Celebrate success appropriately 	<ul style="list-style-type: none"> Show respect to our visitors 	<ul style="list-style-type: none"> Look after each other Act appropriately with others Report unsafe activities/accidents
	Toilets	Buses and Lines	Out of School Events/To and From School	Canteen
Respect	<ul style="list-style-type: none"> Look after our toilets 	<ul style="list-style-type: none"> Follow the driver's instructions Primary students and girls go first Be aware of the people around you 	<ul style="list-style-type: none"> Show respect to members of the public 	<ul style="list-style-type: none"> Line up and wait your turn Make healthy food choices Look after our tables
Responsibility	<ul style="list-style-type: none"> Use them for the purpose intended Try to use them at the appropriate times Be hygienic 	<ul style="list-style-type: none"> Line up calmly behind the yellow line Report any problems Display your tag 	<ul style="list-style-type: none"> Be an awesome ambassador for Te Awamutu College 	<ul style="list-style-type: none"> Leave when you have made your purchase Use the bins
Relationships	<ul style="list-style-type: none"> Respect the privacy of others 	<ul style="list-style-type: none"> Look after the younger kids 	<ul style="list-style-type: none"> Be a positive role model 	<ul style="list-style-type: none"> Use polite and appropriate language